

**ISO 25178 - Roughness (S-L)**

*S-filter ( $\lambda_s$ ): Gaussian, 0.8  $\mu\text{m}$*

*F-operation: None*

*L-filter ( $\lambda_c$ ): Gaussian, 0.25 mm*

**Height parameters**

Sq 1.4 nm

Sa 1.1 nm

**Spatial parameters**

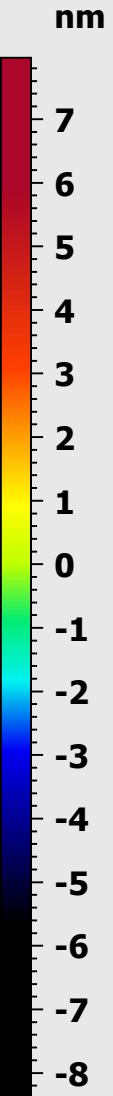
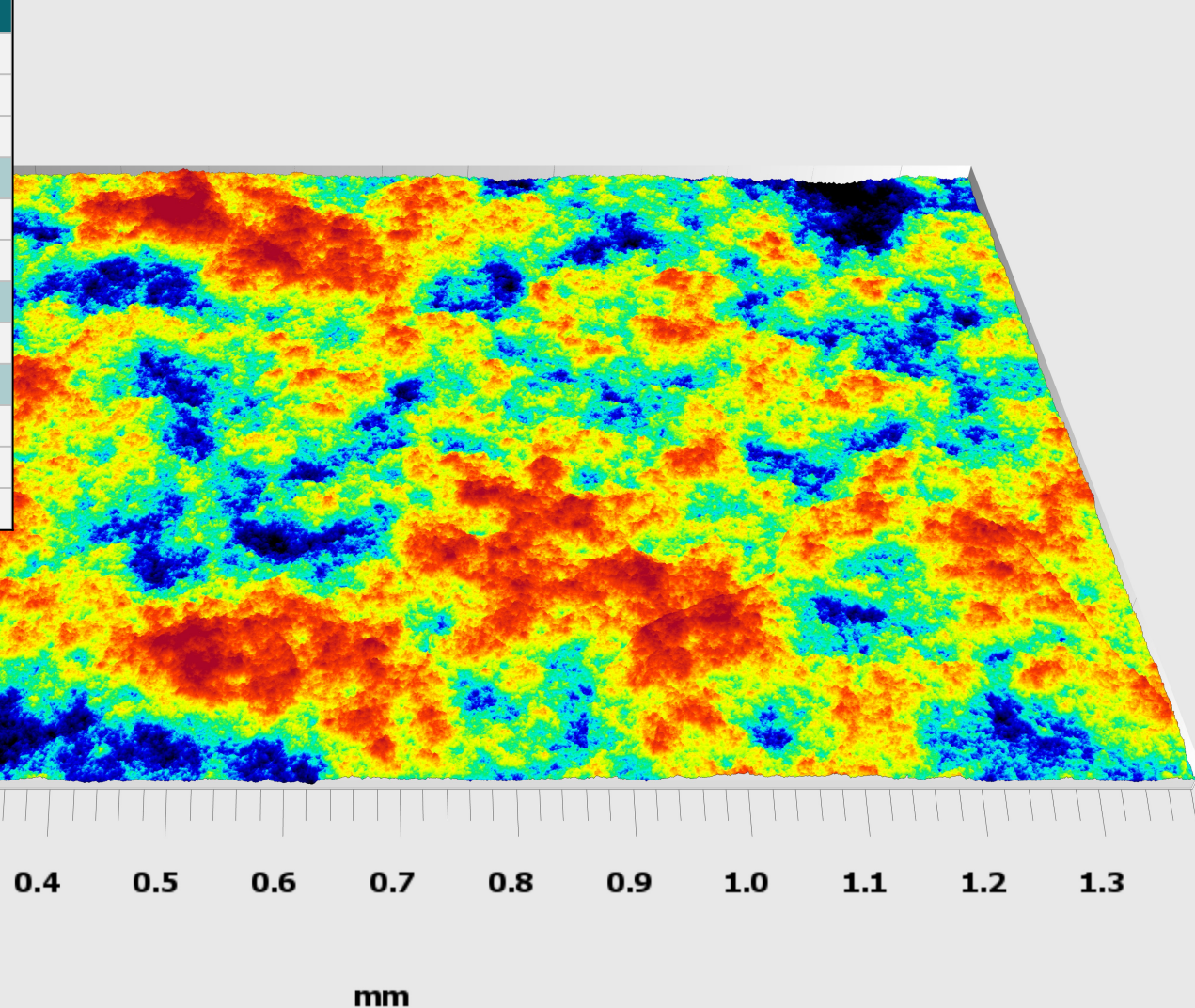
Sal 0.033 mm

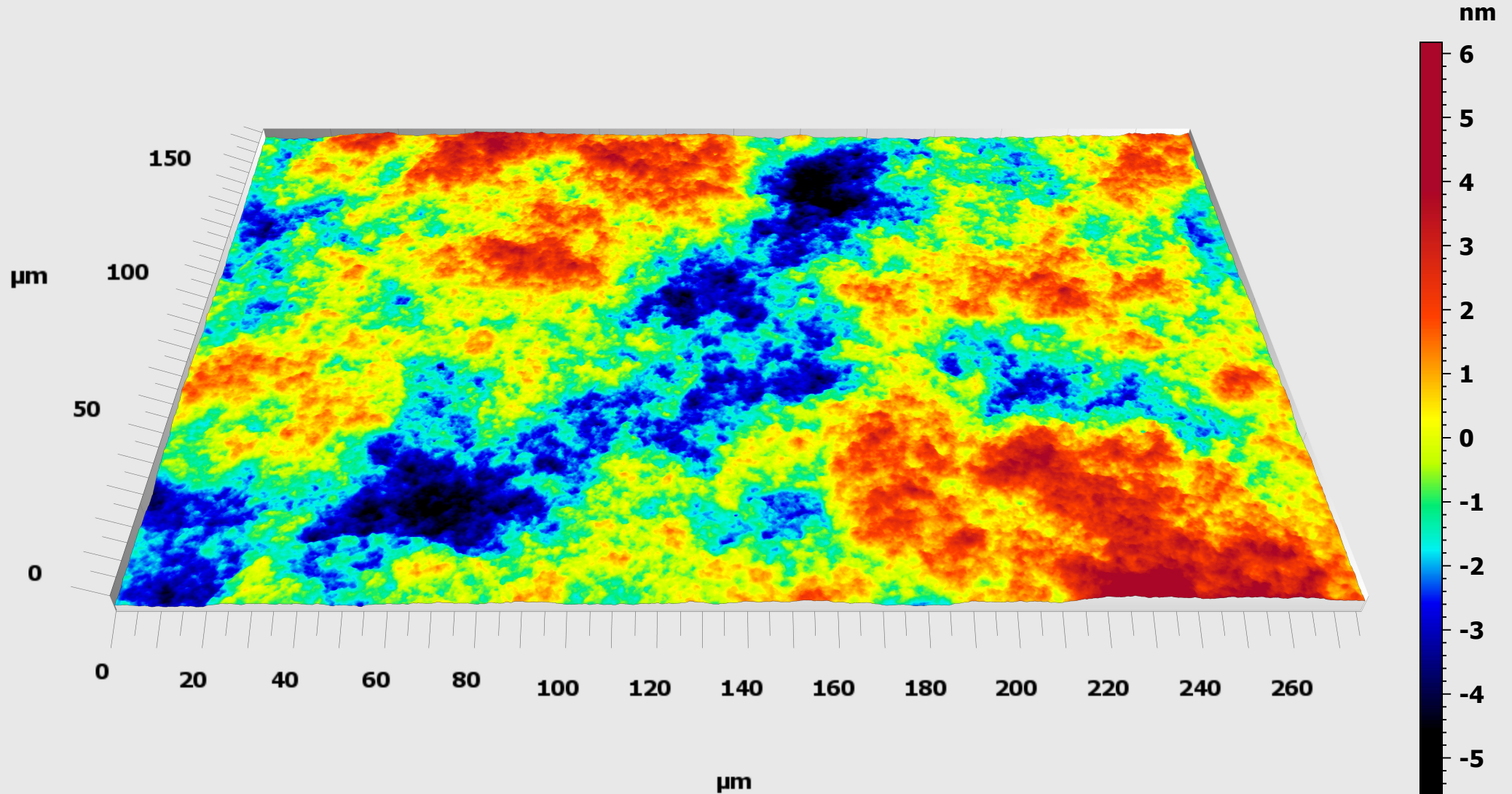
**Functional parameters (stratified surfaces)**

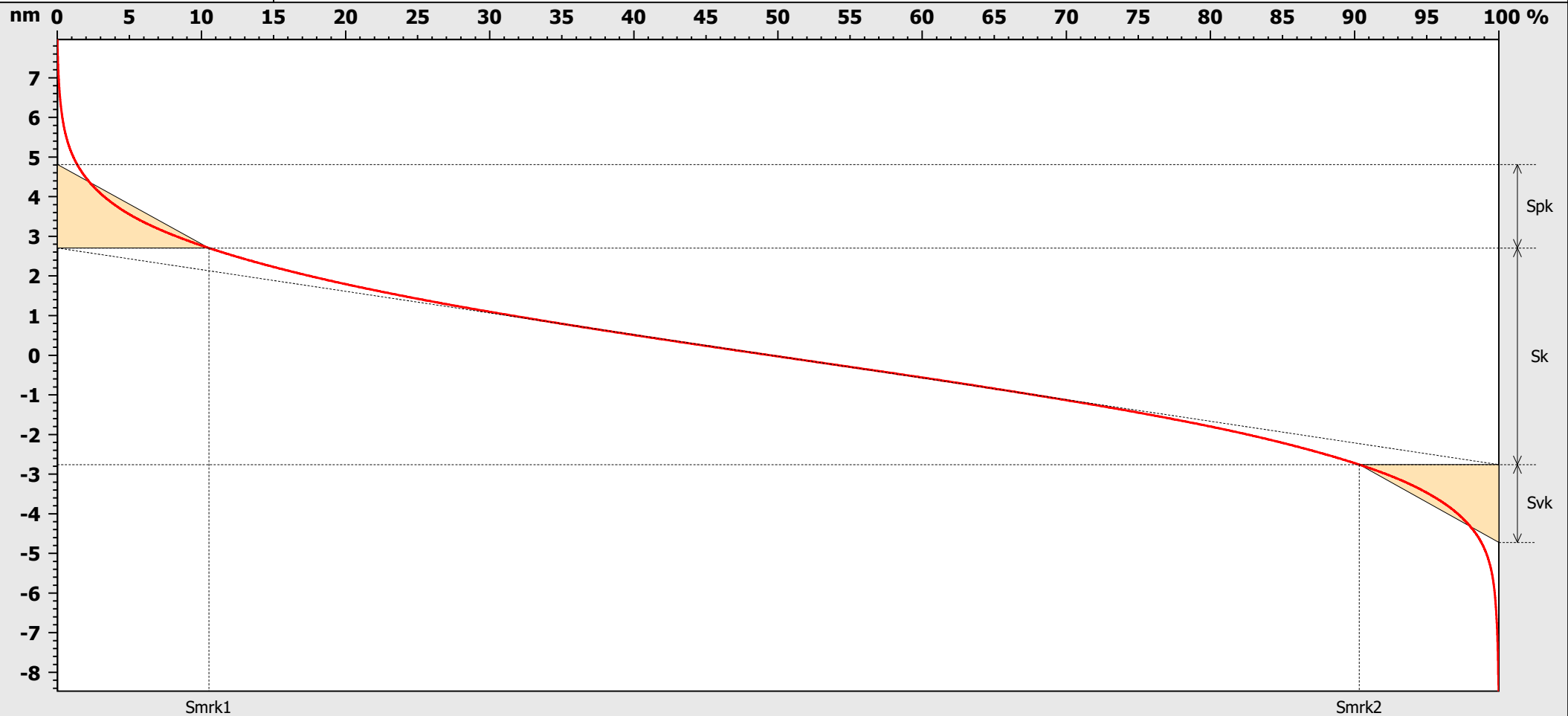
Sk 3.6 nm

Spk 1.3 nm

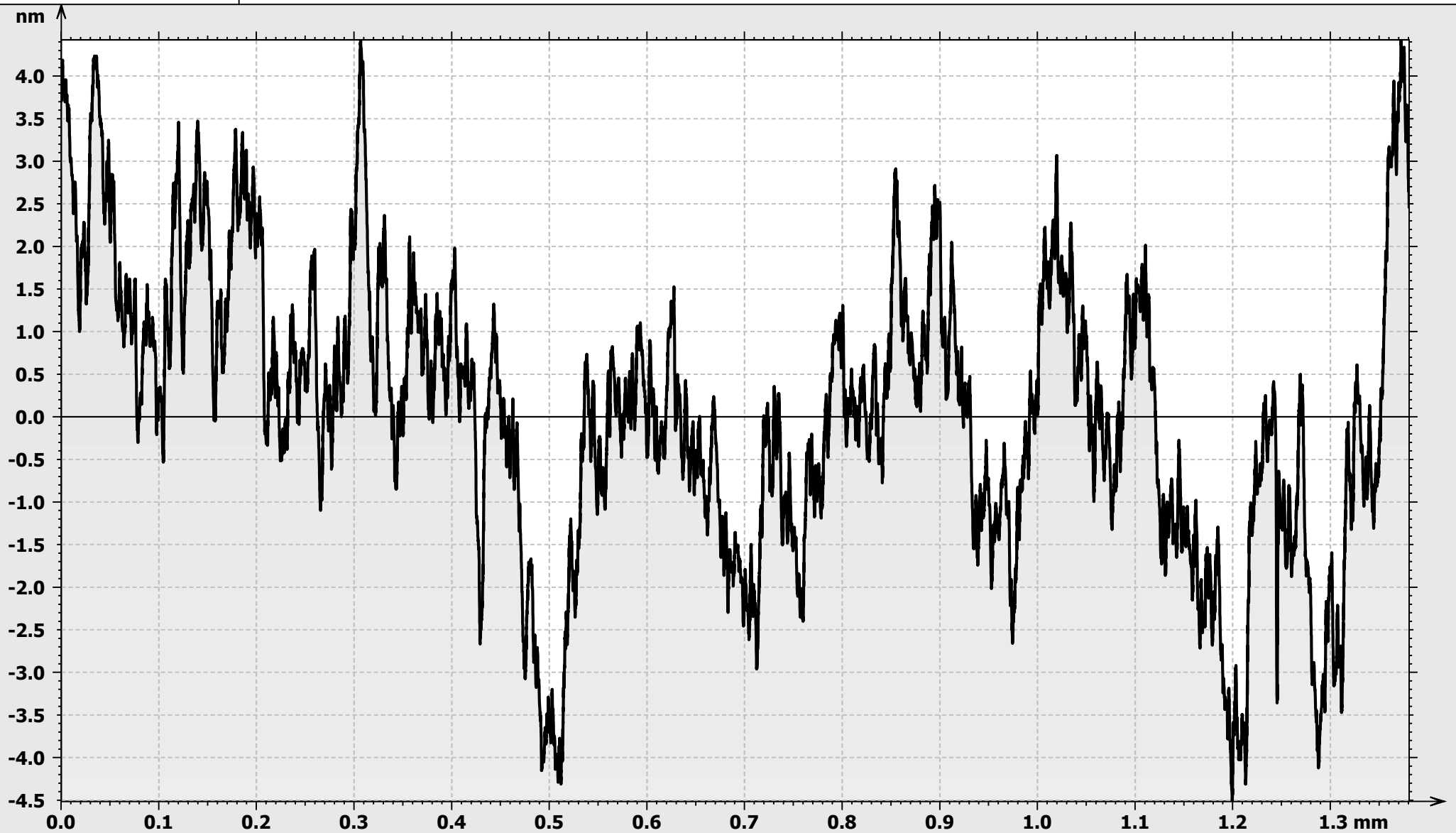
Svk 1.2 nm

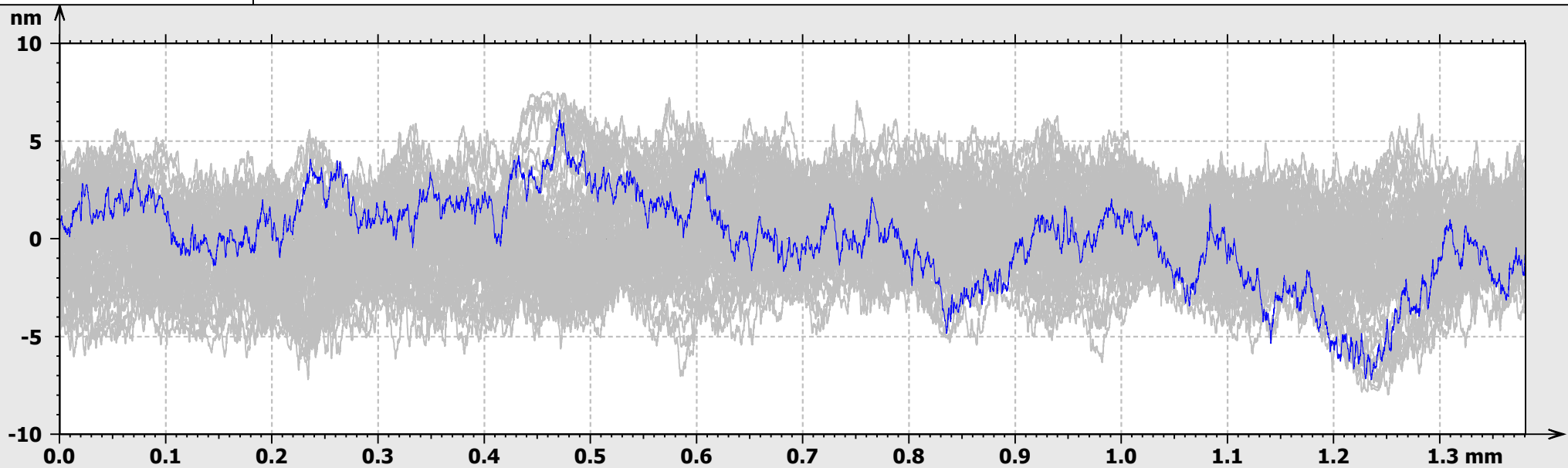






Parameters	Value	Unit
Sk	5.5	nm
Spk	2.1	nm
Svk	2.0	nm





Context	Mean	Std dev	Min	Max
---------	------	---------	-----	-----

**ISO 21920-Main - Roughness (S-L)**

*S-filter ( $\lambda_s$ ): Gaussian, 0.8  $\mu\text{m}$*

*F-operation: None*

*L-filter ( $\lambda_c$ ): Gaussian, 0.25 mm*

*Evaluation length: All  $\lambda_c$  (5)*

**Height parameters**

Rq	nm	1.1	0.082	0.92	1.3
Rz	nm	5.2	0.38	4.3	6.0
Ra	nm	0.89	0.07	0.75	1.1

**Spatial parameters**

Ral	mm	$s = 0.2$	0.02	0.0024	0.014	0.025
-----	----	-----------	------	--------	-------	-------